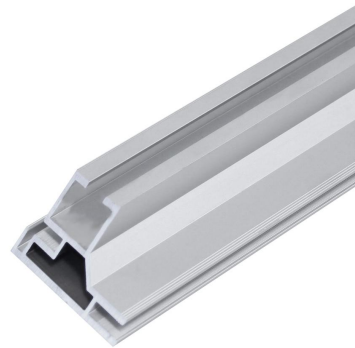
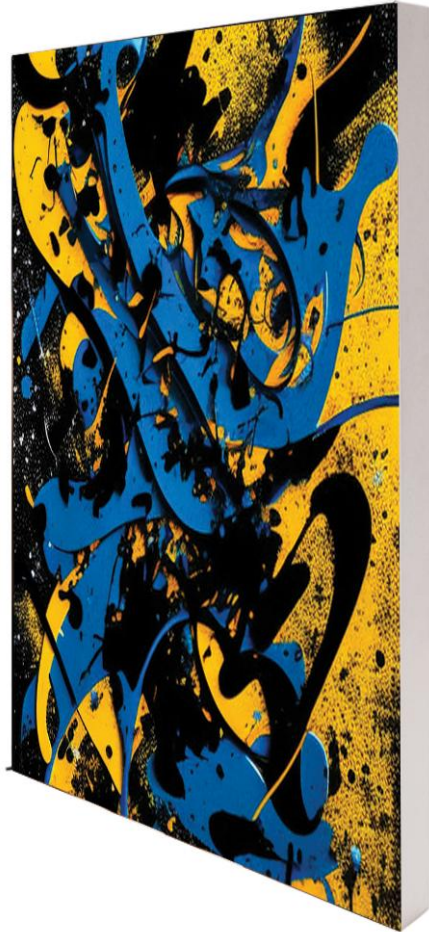


VAIL-60S-WALL

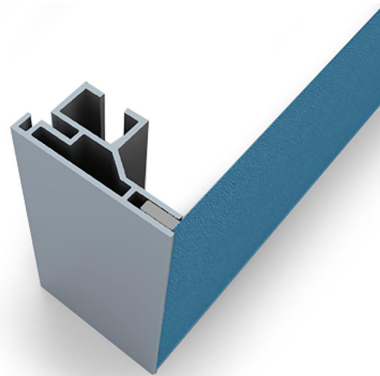


The VAIL-60S-WALL collection is a set of standard sizes of large wall mounted aluminum extrusion frames. The VAIL-60S is a single-sided aluminum extrusion with a profile width of 60mm (2.4 in.) and a sleek silver anodized finish. Custom dye sublimated fabric graphics install easily with SEG (silicone edge graphics) finishing. Simply tuck the silicone beading into each corner of the frame and then work your way around the edges of the frame to complete graphic installation.

OVERVIEW



VAIL-60S Profile



VAIL-60S Profile w/Graphic Installed

- VAIL-60S: 60mm (2.4 in) wide aluminum profile
- Silver anodized finish
- Single-sided graphic display
- Includes wall mounts
- Accepts 3mm x 12 mm keder
- Tooled frame assembly (tools are included)
- 6 standard sizes available
- Product Applications:
 - Wall decoration for home & office
 - Retail store wall advertising
 - Locker rooms
 - and Much more
- Free Ground Shipping
 - Not WS Prime
 - Not One Choice
 - Can ship qtls to multiple addresses
- Custom sizing is available. Customers can contact bd@wsdisplay.com for a custom quote.

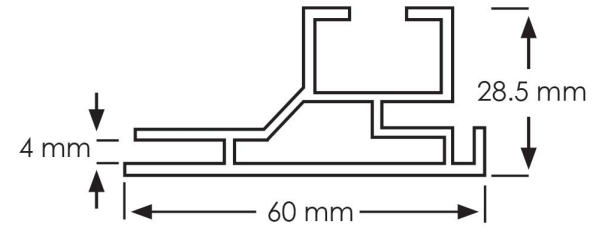
HARDWARE



Triangle Corner Lock Exploded View



Wall Mount



VAIL-60S Profile Measurements

SKUS + SHIP INFO

SKU	Description	Ship Weight	Ship Dimensions
VAIL60S-WALL-8X12GP	8 x 12ft Resort Extrusions: Vail-60S Single-Sided Wall Mount (Graphic Package)	51	96 1/2" L x 6 13/16" W x 6 15/16" D
VAIL60S-WALL-8X12GO	8 x 12ft Resort Extrusions: Vail-60S Single-Sided Wall Mount (Graphic Only)	5	Poly Bag
VAIL60S-WALL-8X12HO	8 x 12ft Resort Extrusions: Vail-60S Single-Sided Wall Mount (Hardware Only)	46	96 1/2" L x 6 13/16" W x 6 15/16" D
VAIL60S-WALL-8X15GP	8 x 15ft Resort Extrusions: Vail-60S Single-Sided Wall Mount (Graphic Package)	57	96 1/2" L x 6 13/16" W x 6 15/16" D
VAIL60S-WALL-8X15GO	8 x 15ft Resort Extrusions: Vail-60S Single-Sided Wall Mount (Graphic Only)	7	Poly Bag
VAIL60S-WALL-8X15HO	8 x 15ft Resort Extrusions: Vail-60S Single-Sided Wall Mount (Hardware Only)	50	96 1/2" L x 6 13/16" W x 6 15/16" D
VAIL60S-WALL-8X20GP	8 x 20ft Resort Extrusions: Vail-60S Single-Sided Wall Mount (Graphic Package)	77	96 1/2" L x 6 13/16" W x 6 15/16" D
VAIL60S-WALL-8X20GO	8 x 20ft Resort Extrusions: Vail-60S Single-Sided Wall Mount (Graphic Only)	10	Poly Bag
VAIL60S-WALL-8X20HO	8 x 20ft Resort Extrusions: Vail-60S Single-Sided Wall Mount (Hardware Only)	67	96 1/2" L x 6 13/16" W x 6 15/16" D
VAIL60S-WALL-9X12GP	9 x 12ft Resort Extrusions: Vail-60S Single-Sided Wall Mount (Graphic Package)	56	72 1/2" L x 6 3/4" W x 6 1/4" D
VAIL60S-WALL-9X12GO	9 x 12ft Resort Extrusions: Vail-60S Single-Sided Wall Mount (Graphic Only)	6	Poly Bag
VAIL60S-WALL-9X12HO	9 x 12ft Resort Extrusions: Vail-60S Single-Sided Wall Mount (Hardware Only)	50	72 1/2" L x 6 3/4" W x 6 1/4" D
VAIL60S-WALL-9X15GP	9 x 15ft Resort Extrusions: Vail-60S Single-Sided Wall Mount (Graphic Package)	62	96 1/2" L x 6 13/16" W x 6 15/16" D
VAIL60S-WALL-9X15GO	9 x 15ft Resort Extrusions: Vail-60S Single-Sided Wall Mount (Graphic Only)	8	Poly Bag
VAIL60S-WALL-9X15HO	9 x 15ft Resort Extrusions: Vail-60S Single-Sided Wall Mount (Hardware Only)	54	96 1/2" L x 6 13/16" W x 6 15/16" D
VAIL60S-WALL-9X20GP	9 x 20ft Resort Extrusions: Vail-60S Single-Sided Wall Mount (Graphic Package)	77	72 1/2" L x 6 3/4" W x 6 1/4" D
VAIL60S-WALL-9X20GO	9 x 20ft Resort Extrusions: Vail-60S Single-Sided Wall Mount (Graphic Only)	10	Poly Bag
VAIL60S-WALL-9X20HO	9 x 20ft Resort Extrusions: Vail-60S Single-Sided Wall Mount (Hardware Only)	67	72 1/2" L x 6 3/4" W x 6 1/4" D
VAIL60S-WALL-10X12GP	10 x 12ft Resort Extrusions: Vail-60S Single-Sided Wall Mount (Graphic Package)	58	72 1/2" L x 6 3/4" W x 6 1/4" D
VAIL60S-WALL-10X12GO	10 x 12ft Resort Extrusions: Vail-60S Single-Sided Wall Mount (Graphic Only)	7	Poly Bag
VAIL60S-WALL-10X12HO	10 x 12ft Resort Extrusions: Vail-60S Single-Sided Wall Mount (Hardware Only)	51	72 1/2" L x 6 3/4" W x 6 1/4" D
VAIL60S-WALL-10X15GP	10 x 15ft Resort Extrusions: Vail-60S Single-Sided Wall Mount (Graphic Package)	64	96 1/2" L x 6 13/16" W x 6 15/16" D
VAIL60S-WALL-10X15GO	10 x 15ft Resort Extrusions: Vail-60S Single-Sided Wall Mount (Graphic Only)	8	Poly Bag
VAIL60S-WALL-10X15HO	10 x 15ft Resort Extrusions: Vail-60S Single-Sided Wall Mount (Hardware Only)	54	96 1/2" L x 6 13/16" W x 6 15/16" D
VAIL60S-WALL-10X20GP	10 x 20ft Resort Extrusions: Vail-60S Single-Sided Wall Mount (Graphic Package)	80	72 1/2" L x 6 3/4" W x 6 1/4" D
VAIL60S-WALL-10X20GO	10 x 20ft Resort Extrusions: Vail-60S Single-Sided Wall Mount (Graphic Only)	11	Poly Bag
VAIL60S-WALL-10X20HO	10 x 20ft Resort Extrusions: Vail-60S Single-Sided Wall Mount (Hardware Only)	69	72 1/2" L x 6 3/4" W x 6 1/4" D

HARDWARE ONLY PARTS LISTS

8x12

Part	qty
96" VAIL-60S Profile	2
72" VAIL-60S Profile	4
36" VAIL-MAM-40C	2
48" VAIL-MAM-40C	4
AF-CENTCON	2
AF-SLIM-WALLMT	16
VAIL-CRNR	4
ALLEN-4mm	1

9x12

Part	qty
54" VAIL-60S Profile	4
72" VAIL-60S Profile	4
36" VAIL-MAM-40C	2
54" VAIL-MAM-40C	4
AF-CENTCON	4
AF-SLIM-WALLMT	16
VAIL-CRNR	4
ALLEN-4mm	1

10x12

Part	qty
60" VAIL-60S Profile	4
72" VAIL-60S Profile	4
36" VAIL-MAM-40C	2
60" VAIL-MAM-40C	4
AF-CENTCON	4
AF-SLIM-WALLMT	8
VAIL-CRNR	4
ALLEN-4mm	1

8x15

Part	qty
96" VAIL-60S Profile	2
90" VAIL-60S Profile	4
45" VAIL-MAM-40C	2
48" VAIL-MAM-40C	4
AF-CENTCON	2
AF-SLIM-WALLMT	16
VAIL-CRNR	4
ALLEN-4mm	1

9x15

Part	qty
54" VAIL-60S Profile	4
90" VAIL-60S Profile	4
45" VAIL-MAM-40C	2
54" VAIL-MAM-40C	4
AF-CENTCON	4
AF-SLIM-WALLMT	16
VAIL-CRNR	4
ALLEN-4mm	1

10x15

Part	qty
60" VAIL-60S Profile	4
90" VAIL-60S Profile	4
45" VAIL-MAM-40C	2
60" VAIL-MAM-40C	4
AF-CENTCON	4
AF-SLIM-WALLMT	16
VAIL-CRNR	4
ALLEN-4mm	1

8x20

Part	qty
96" VAIL-60S Profile	2
60" VAIL-60S Profile	8
60" VAIL-MAM-40C	2
48" VAIL-MAM-40C	4
AF-CENTCON	6
AF-SLIM-WALLMT	16
VAIL-CRNR	4
ALLEN-4mm	1

9x20

Part	qty
54" VAIL-60S Profile	4
60" VAIL-60S Profile	8
60" VAIL-MAM-40C	2
54" VAIL-MAM-40C	4
VAIL-CRNR	6
AF-SLIM-WALLMT	16
VAIL-CRNR	4
ALLEN-4mm	1

10x20

Part	qty
60" VAIL-60S Profile	4
60" VAIL-60S Profile	8
60" VAIL-MAM-40C	6
AF-CENTCON	6
AF-SLIM-WALLMT	16
VAIL-CRNR	4
ALLEN-4mm	1

GRAPHIC INFO

- **Material:** Stretch Fabric (INV-FAB-STRETCH)
- **Print Process:** Paper Transfer Dye Sublimation
- **Finishing:** Silicone Edge Graphic (SEG) Finishing w/12mm x 3mm Keder
- **Graphic Options:**
 - Single Sided Graphics Only
- **Production Time:** 3 business days for up to 2 sets
- **Locations:** PA and PFC
- **Rush Production:** Not Available.



Stretch - OC

Thickness	Printing Process	Finishing	Maximum Media Width
8.08 oz	Dye Sublimation Paper Transfer	Soft Look Bright Colors	94"

SHIPPING & WARRANTY



Shipping

- Graphic Package ship from: PFC and PA
- Graphic Only ship from: PFC and PA
- Hardware Only ship from: PFC and PA
- Free Ground Shipping
 - Not WS Prime
 - Not One Choice
 - Can ship qty's to multiple addresses

Warranty

- 1 year warranty on graphics
- Lifetime warranty on hardware

Returns

- RMA's will be shipped back to PA

Shipping Dimensions

- Varies depending on size of frame. Reference SpecSheet for full details