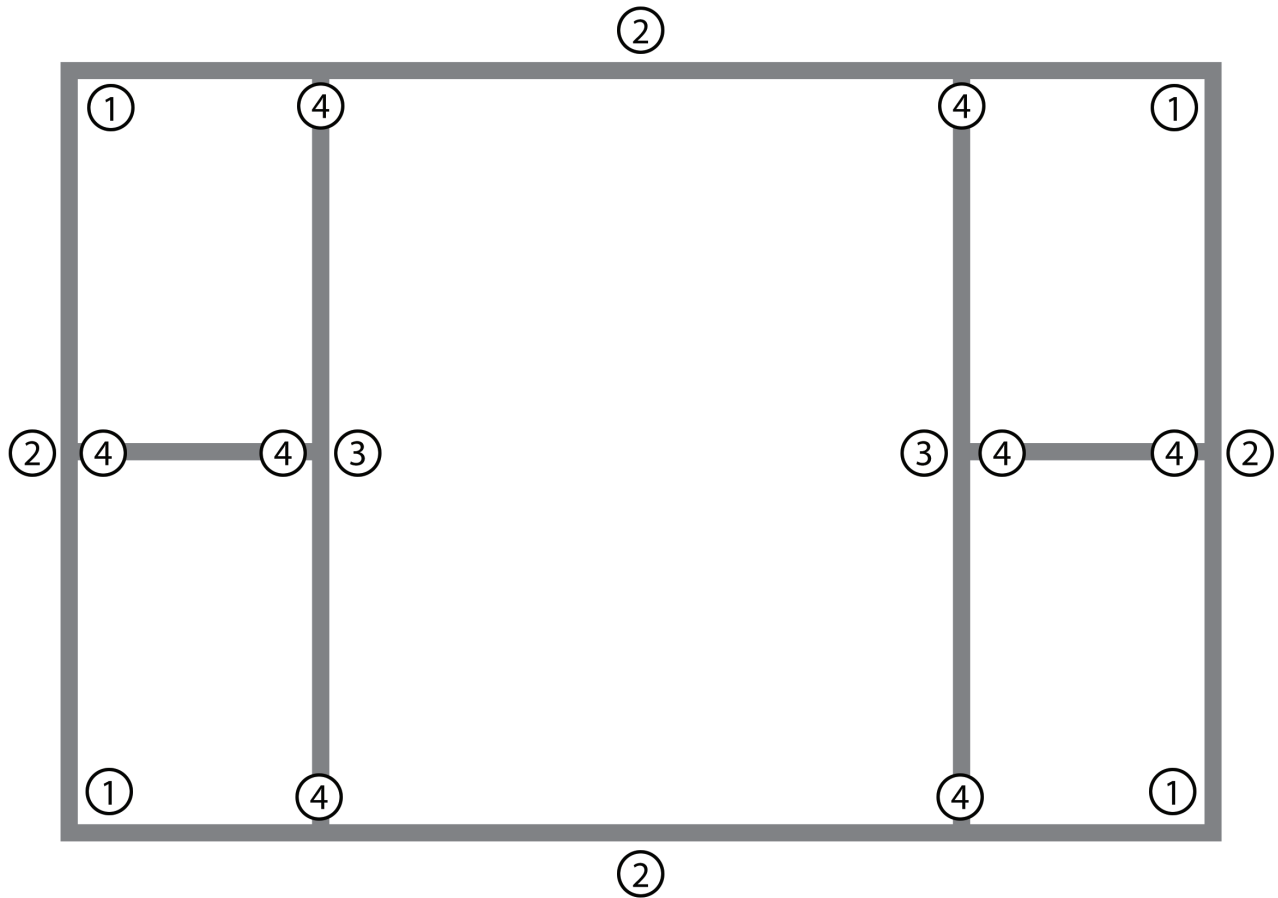
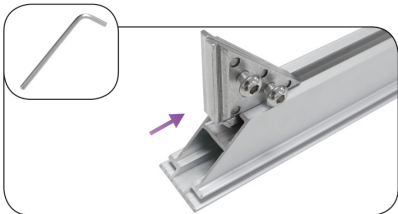


# VAIL-60S-WALL

## FRAME ASSEMBLY INSTRUCTIONS

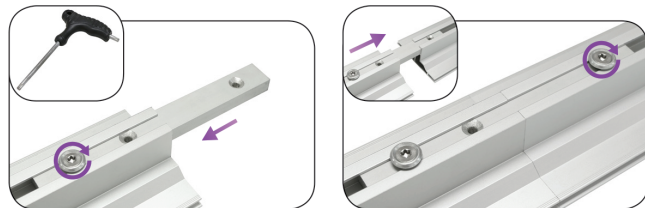


### 1. Corner Locks



Slide triangle lock into the channel on one extrusion. Then attach adjacent extrusion onto the other side of the triangle connector. Tighten screws with the provided 5mm allen key to secure

### 2. Split Connectors



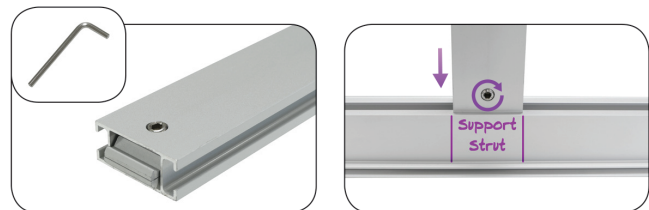
Slide split connector into channels on profiles and tighten screws with provided tool.  
\*Note: Only required on frame lengths longer than 6ft

### 3. Strut Split Connectors



Remove screws from split connector and insert into one end of the strut. Align hole on strut with connector and then insert screws and tighten with provided allen key. Repeat process for other side of the strut to complete assembly.

### 4. Strut Connection

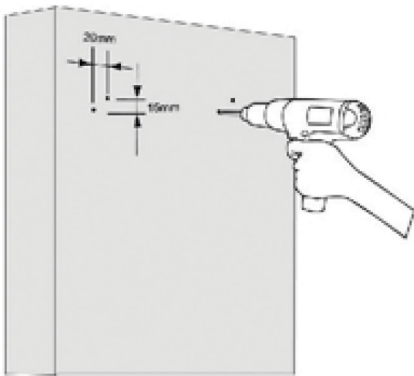


Make sure end locks are in the closed position (turn screw counterclockwise to close) and then insert into channel on frame or strut it will be connected to. Tighten screw with provided tool to lock the strut in place.

# VAIL-60S-WALL

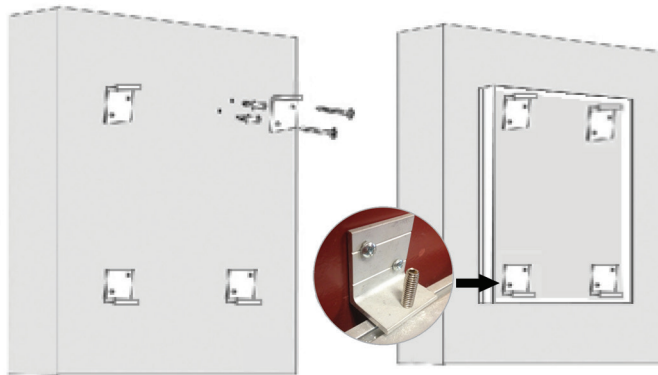
## WALL MOUNT INSTALLATION INSTRUCTIONS

---



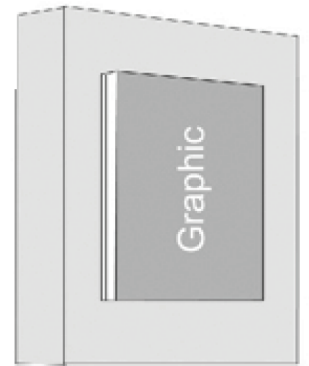
Position the wall mounts on the wall close enough for the threaded screw to be able to apply pressure to the frame. Space them evenly across the top and bottom edges of the inside edges of the frame. Mark the hole locations with a pen or marker and drill holes large enough to fit the plastic screw anchors.

\*There will be 8 wall mounts across the top and 8 wall mounts across the bottom.



Insert wall anchors into holes, place wall mount over wall anchors making sure holes on mounts line up with anchors. Insert screws into holes and tighten them with a screwdriver to secure.

Tighten allen key screws on wall mounts to apply pressure to the frame. Repeat for all wall mounts to secure frame to the wall.



Install your graphic by tucking the silicone beading into each corner of the frame and then working your way around the edges of the frame to complete graphic installation.